

Figure 1. Chromatin accessibility is altered in senescence

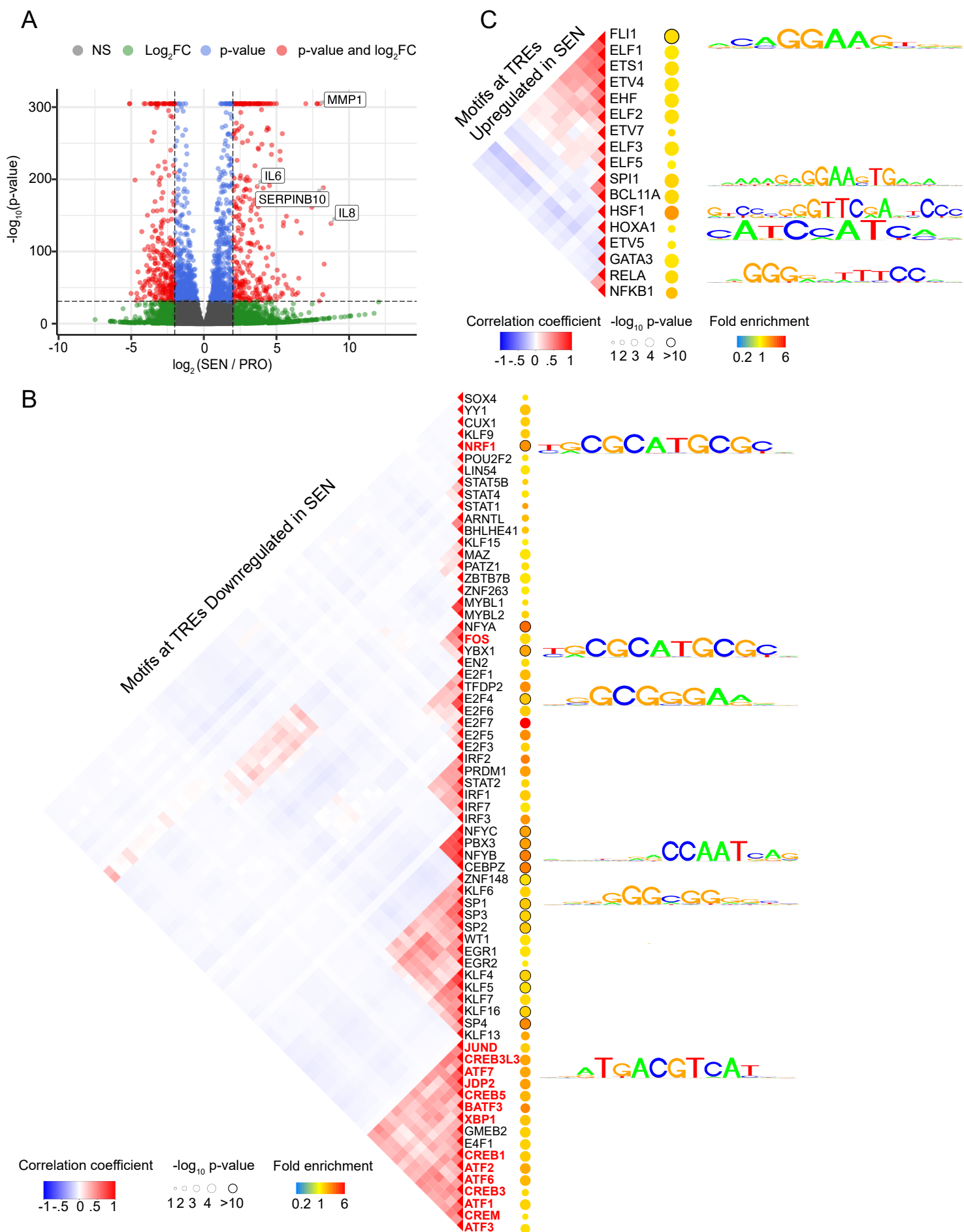


Figure 2. Nascent transcription is altered in senescence.

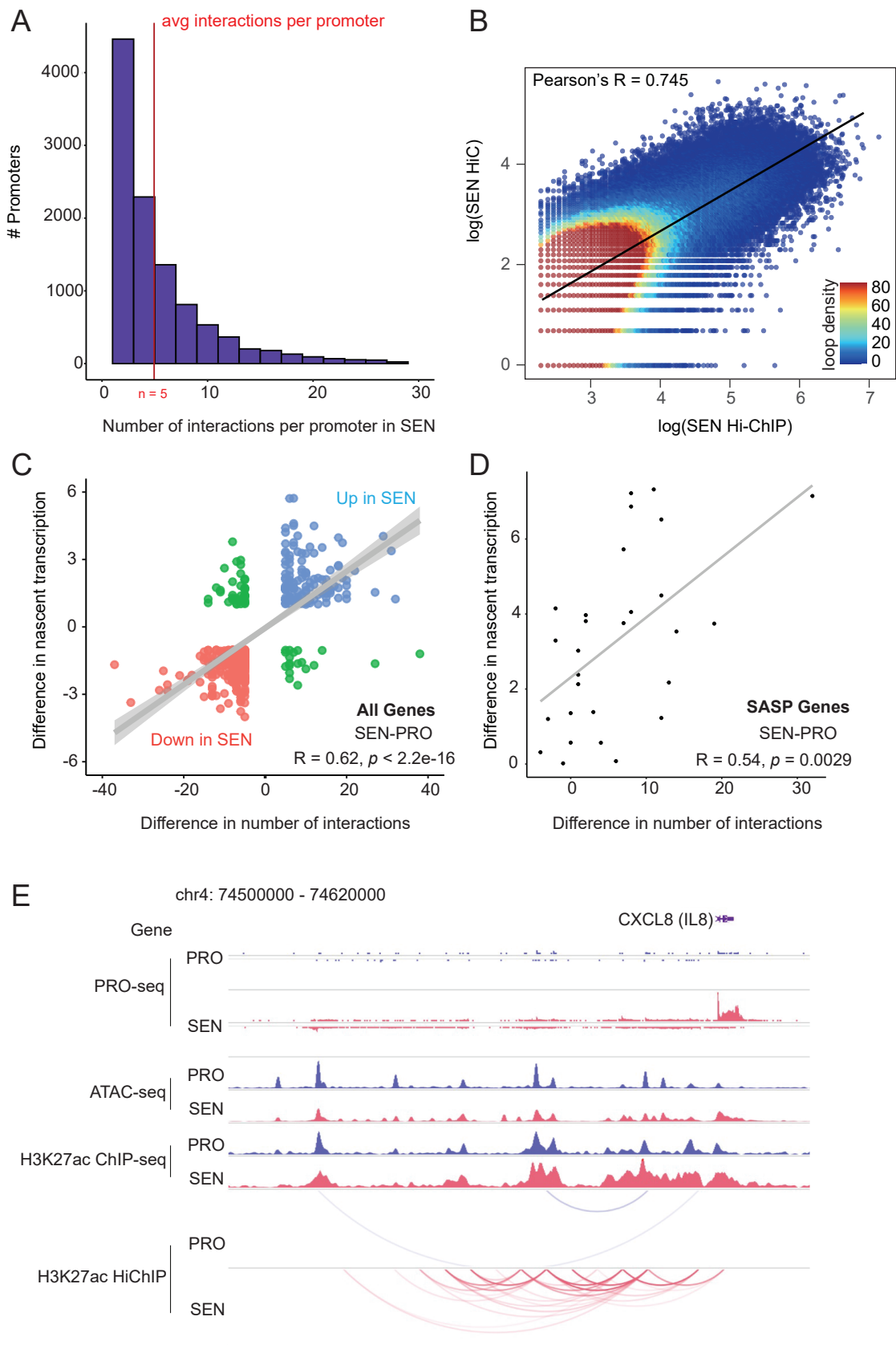


Figure 3. Multiple regulatory elements regulate gene expression.

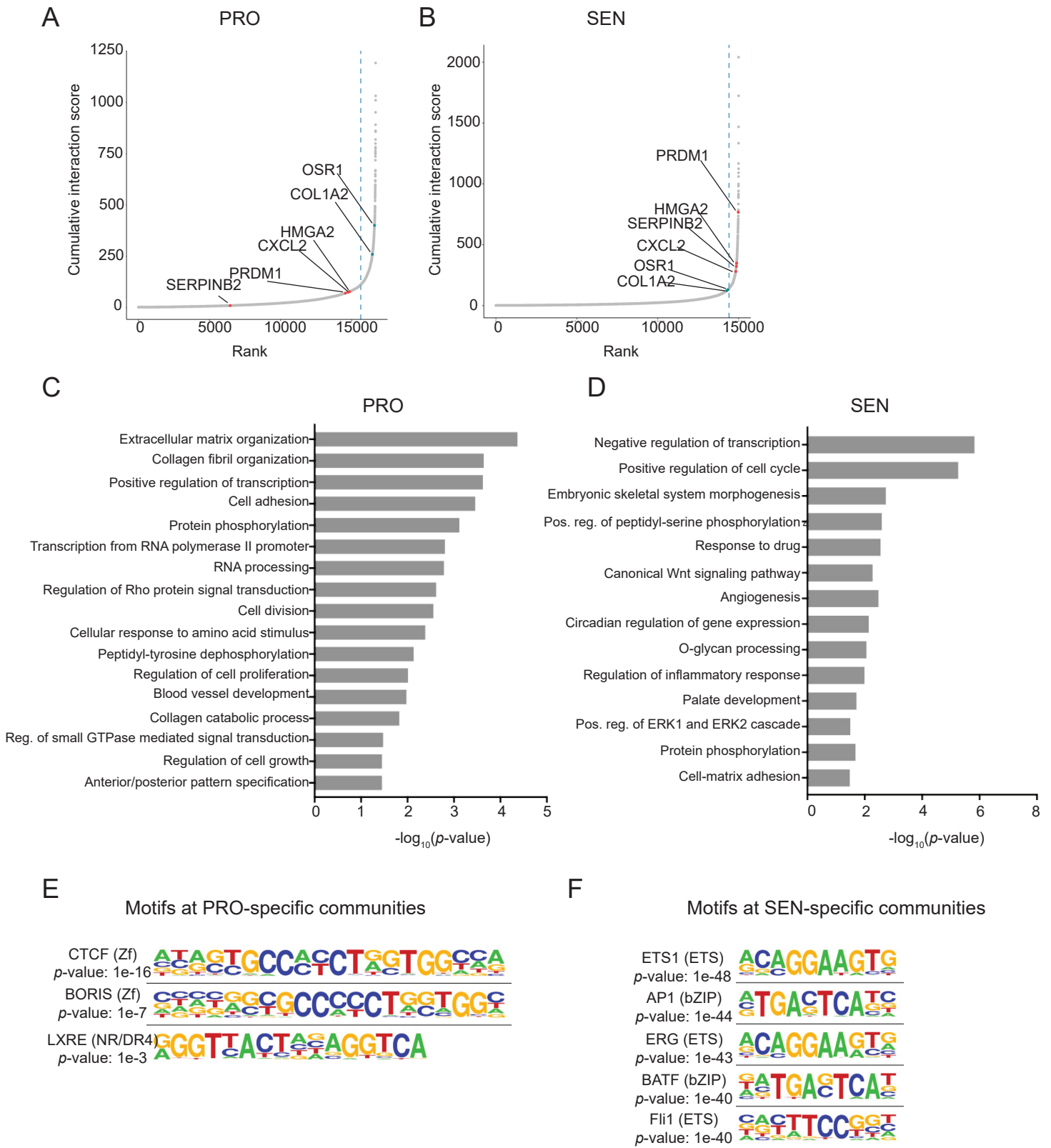


Figure 4. Hyperconnected enhancer hubs regulate state-specific genes.

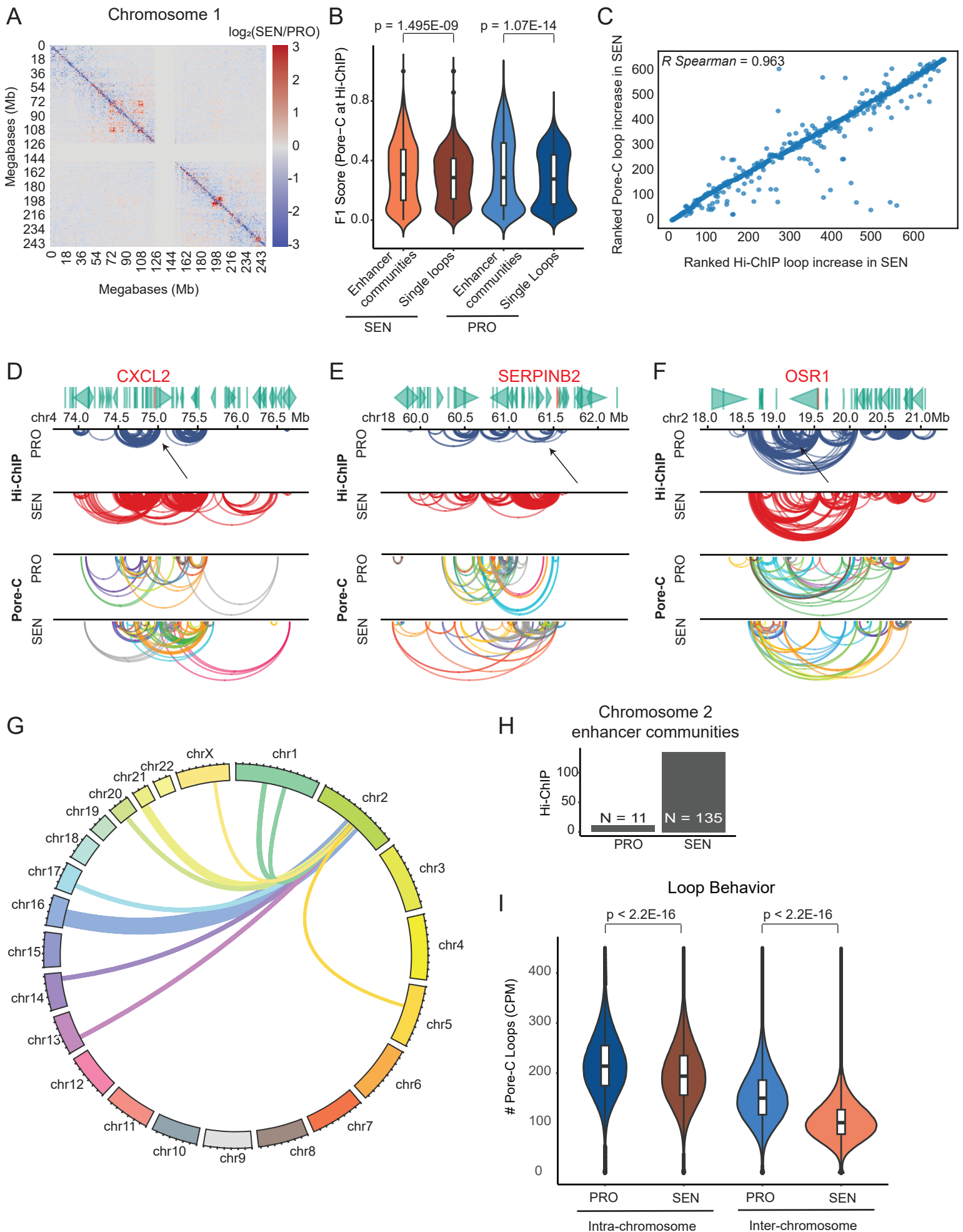


Figure 5. Pore-C captures enhancer communities in single cells

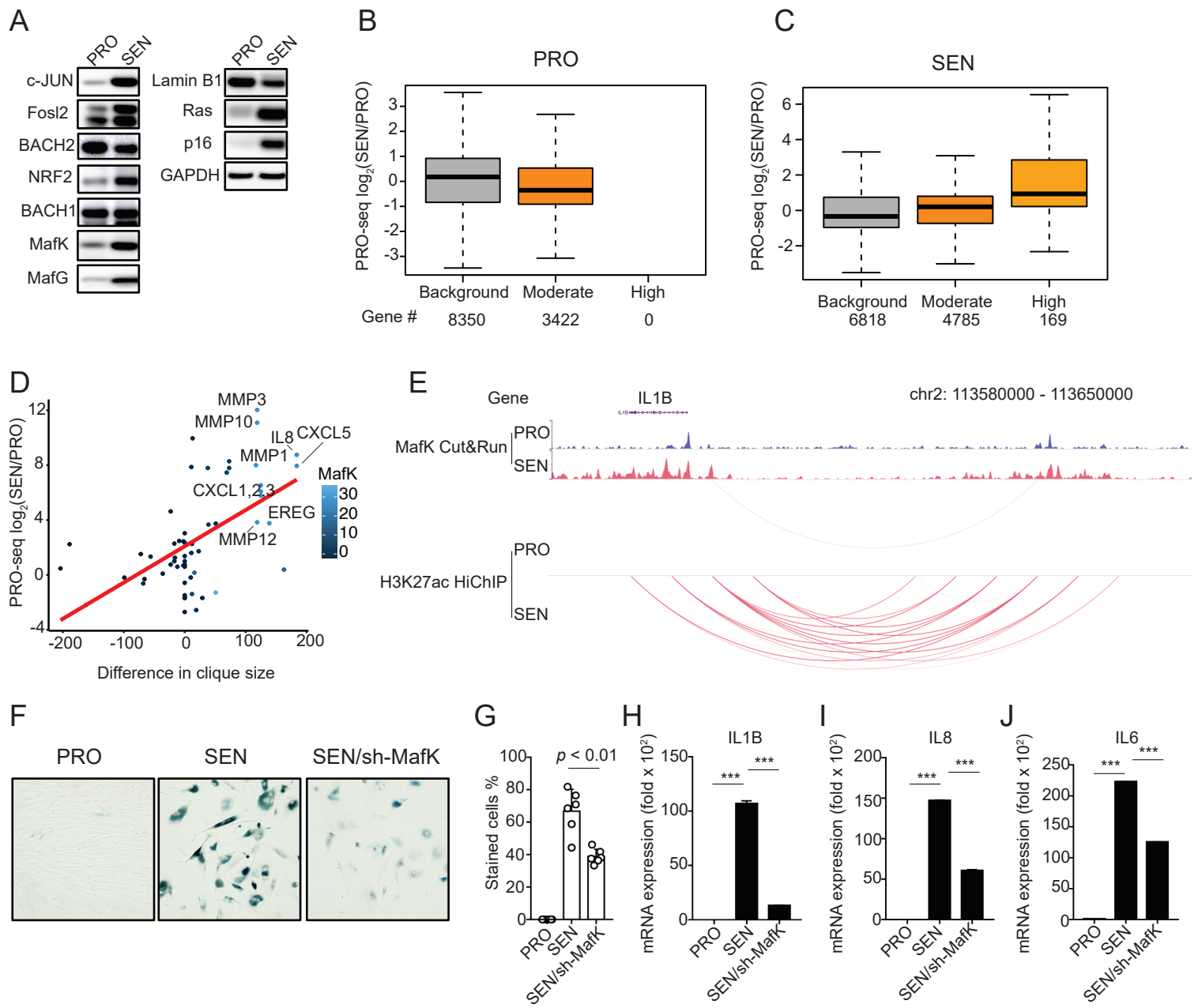


Figure 6. MafK regulates enhancer hubs and senescence.

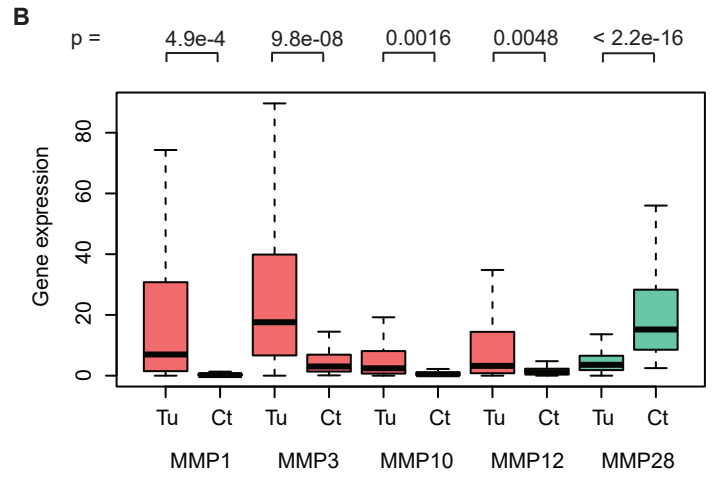
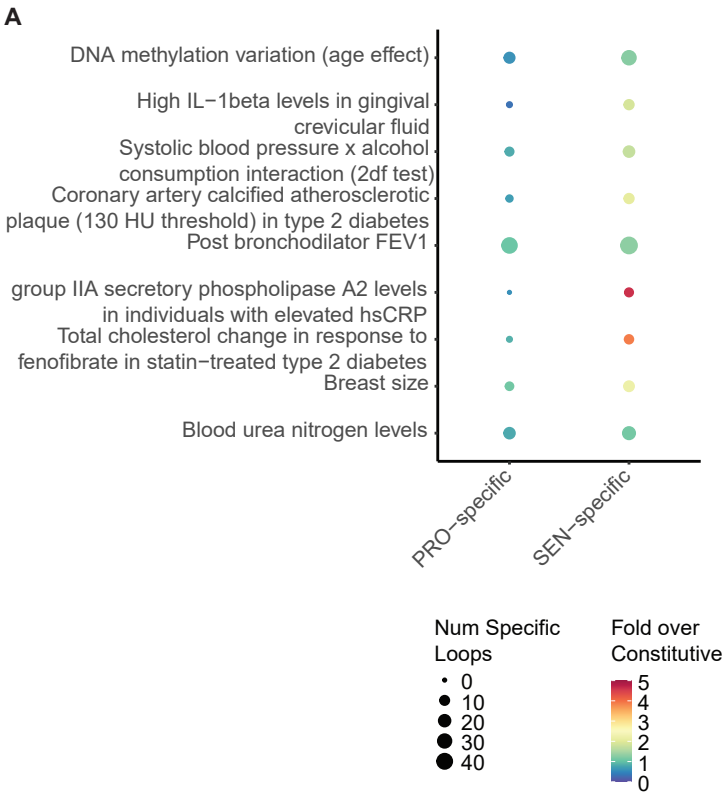


Figure 7. Disease-associated traits in hyper-connected enhancer communities.

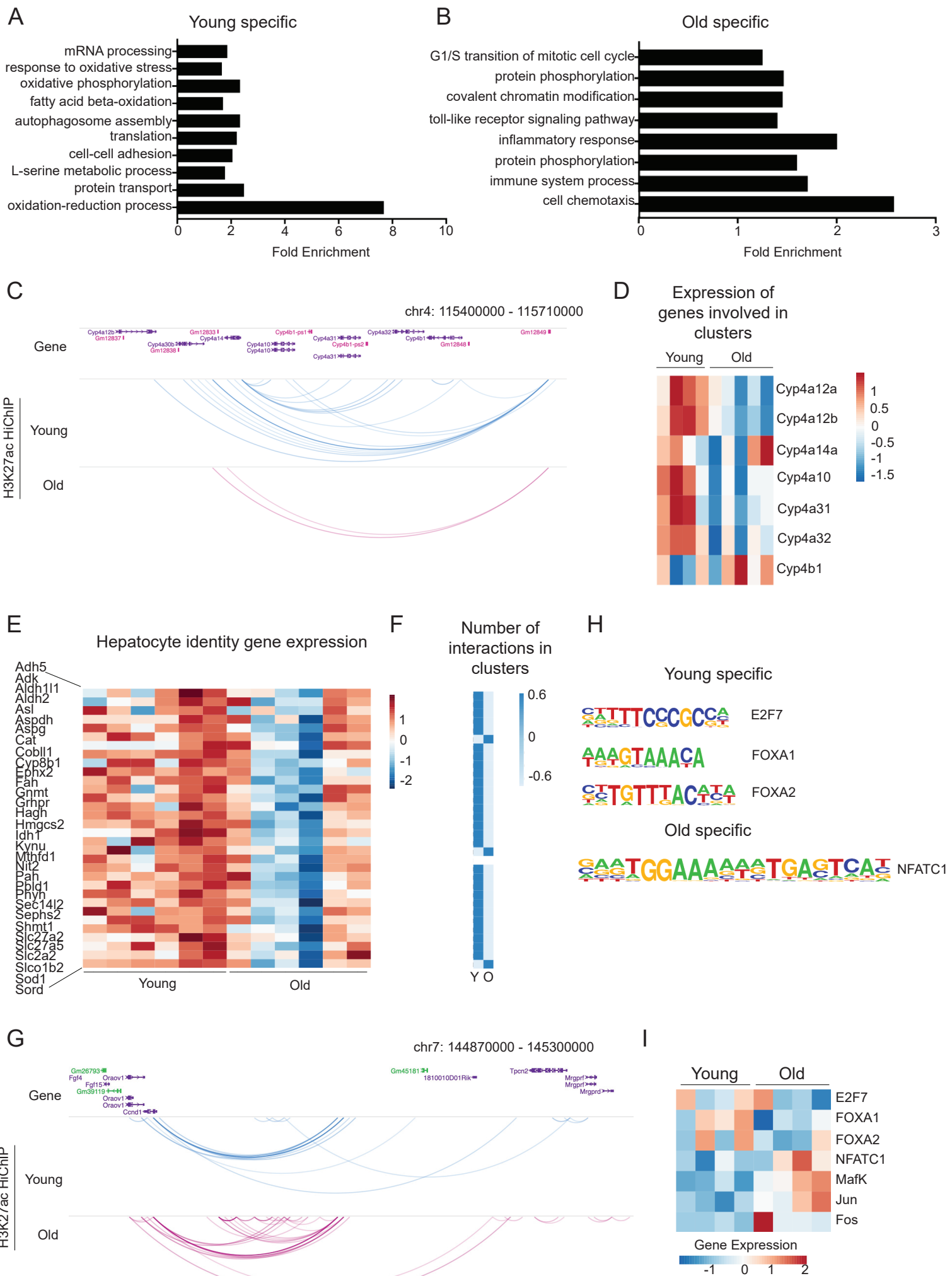


Figure 8. Enhancer hubs are dynamic during aging.